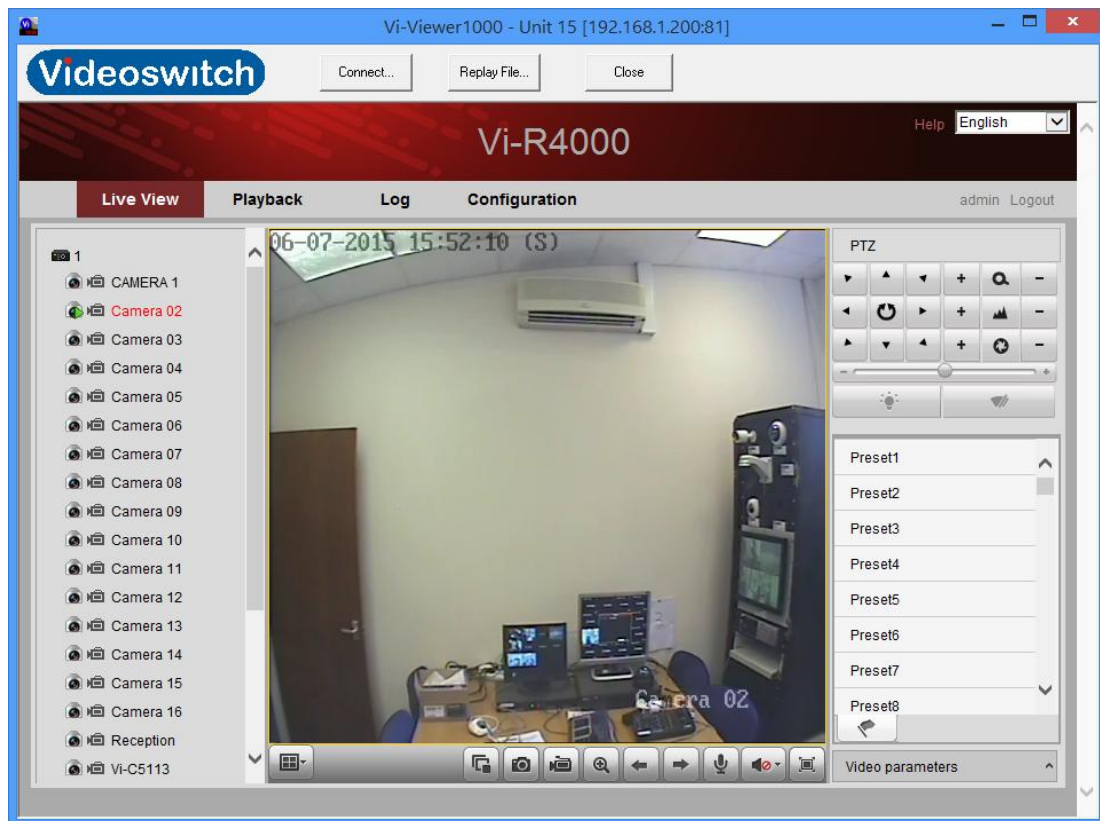




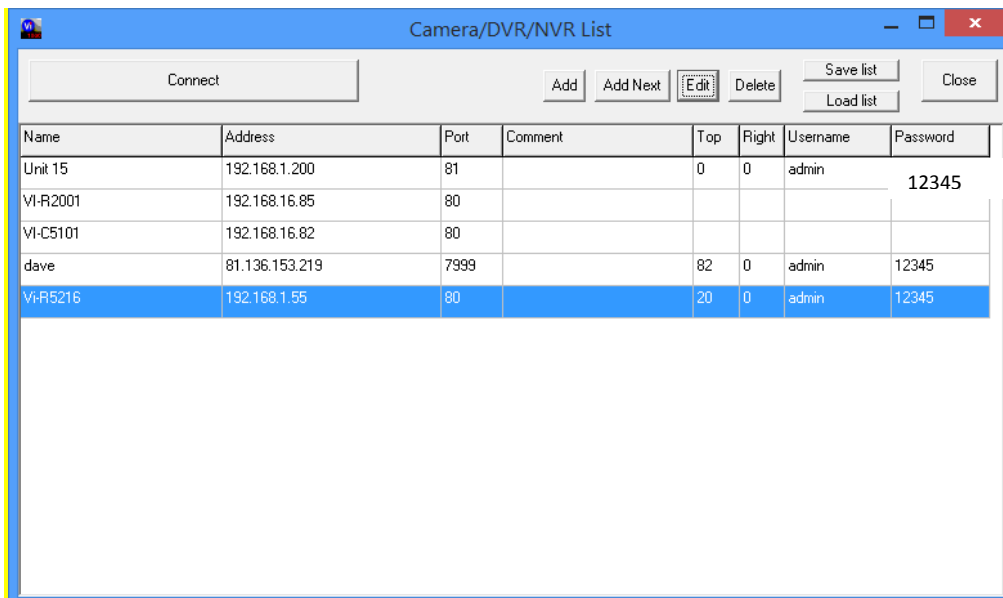
## Vi-Viewer1000 User Manual



Document Reference	Date	Firmware
Vi-V1000a.doc	07/07/2015	Vi-Viewer1000
Videoswitch		Telephone 01252-851510
Unit 15, Redfields Industrial Park		Fax 01252-851296
Redfields Lane, Church Crookham		Email sales@videoswitch.co.uk
Hants GU52 ORD		Web www.videoswitch.co.uk

# 1. Getting Started

- 1.1 First download the latest version of Vi-Viewer1000 from [www.videoswitch.co.uk](http://www.videoswitch.co.uk) in the support section select software downloads, now download and install the Vi-Viewer1000 software.
- 1.2 Now open the software and select **Connect**, a pop-up window should appear, select **Add**.
- 1.3 Another pop-up window will appear, this is where you add the device or IP camera.
- 1.4 Enter the **Device name** (anything you wish to call the device).
- 1.5 The **IP** address you have given the DVR/NVR or IP camera.
- 1.6 The **Port** number, (default is 80)
- 1.7 You can now add the auto-login **User name** and **Password**, (if this is not entered you will be asked when you try to connect)
- 1.8 The Crop options allow you to crop and hide parts of the displayed images when connected.
- 1.9 Select OK to save the settings.
- 1.10 You can add multiple devices by repeating the steps above.



Device

Device Name: Vi-R5216

IP Address: 192.168.1.55

Port: 80

Auto-login: Username: admin, Password: 12345

Comments:

Crop unwanted parts of the screen

Crop top of screen: 20

Crop Right of screen: 0

0 pixels, 50 pixels, 400 pixels


Ok, Cancel, Defaults

## 2. Remote Connection

- 2.1 To connect to a DVR/NVR or IP camera select **Connect**, a list of your devices will appear, left click to highlight the device you want to view.
- 2.2 Now select **Connect** again, this will login to the device. (If it asks for a password enter this before final connection).

### 3. Live Viewing

3.1 **Live View**, this screen allows you to see live images from your device.



3.1 You can select the screen layout by selecting the  icon, to see cameras left click on a layout square then left click the camera from the list on the left.

3.2 To stop all live view cameras select the  icon.

3.3 To capture images to your local PC select the  icon.

3.4 For video capture to local PC select the  icon.

3.5 To enable e-PTZ select the  for PTZ cameras.

3.6 Selecting the  and  icons steps the camera view forward or backwards.

3.7 To start a 2 way audio conversation select the  icon.

3.8 To mute the audio select the  icon.

3.9 For full screen viewing select the  icon, press ESC to exit.




Live view tool bar




## 4. Playback

4.1 This screen allows you to review previously recorded images.





4.2 You can select the replay screen format by selecting the  icon, to see cameras left click on a layout square then left click the camera from the list on the left.

4.3 Select the date using the calendar on the right, recorded days are marked.

4.4 Now select the play  icon, you can now see a timeline indicating recorded periods. Use the left click on the mouse to drag the timeline to the period you require.

4.5 You can fast forward , or slow forward  the image.

4.6 You can also stop , pause  or frame advance  the playback.

- 4.7 To stop all playback use the  icon.
- 4.8 To capture images select the  icon, capture path is set in the configuration section under local configuration.
- 4.9 You can create video clips for download by left clicking the mouse on the timeline and dragging the marker to the start of the incident, now left click on the  icon to start clipping. Now drag the timeline to the end of the incident and when you release the mouse it will end the clip.
- 4.10 To download the clip to your PC select the  icon. The download path is set in the configuration section under local configuration.



Playback tool bar

## 5. Log Search

- 5.1 The recorders log can be searched for incidents using the log screen.
- 5.2 You can search for various incidents such as Alarm, Exception, Operation and Information. Input the start time and date and the end time and date of search then select search.
- 5.3 You can save the log by selecting the save log option, this will call up a save screen so you can set the destination.

The screenshot shows the Vi-Viewer1000 interface with the 'Log' tab selected. The main area displays a table of log entries with the following data:

No.	Time	Major Type	Minor Type	Channel No.	Local/Remote User	Remote Host IP
1	2015-07-06 00:00:27	Information	S.M.A.R.T. Information	1		0.0.0.0
2	2015-07-06 00:00:27	Information	S.M.A.R.T. Information	2		0.0.0.0
3	2015-07-06 00:00:37	Alarm	Start Motion Detection	A3		0.0.0.0
4	2015-07-06 00:00:43	Alarm	Stop Motion Detection	A3		0.0.0.0
5	2015-07-06 00:02:42	Information	System Running State			0.0.0.0
6	2015-07-06 00:04:06	Alarm	Stop Motion Detection	D5		0.0.0.0
7	2015-07-06 00:04:10	Alarm	Start Motion Detection	D5		0.0.0.0
8	2015-07-06 00:08:34	Alarm	Stop Motion Detection	D5		0.0.0.0
9	2015-07-06 00:08:40	Alarm	Start Motion Detection	D5		0.0.0.0
10	2015-07-06 00:10:39	Alarm	Stop Motion Detection	D5		0.0.0.0
11	2015-07-06 00:10:41	Alarm	Start Motion Detection	D5		0.0.0.0
12	2015-07-06 00:12:25	Alarm	Stop Motion Detection	D5		0.0.0.0
13	2015-07-06 00:12:35	Alarm	Start Motion Detection	D5		0.0.0.0
14	2015-07-06 00:12:42	Information	System Running State			0.0.0.0
15	2015-07-06 00:12:53	Alarm	Stop Motion Detection	D5		0.0.0.0

The 'Search Log' panel on the right includes the following fields and controls:

- Major Type: All Types (dropdown)
- Minor Type: All Types (dropdown)
- Start Time: 2015-07-06 00:00:00 (calendar icon)
- End Time: 2015-07-06 23:59:59 (calendar icon)
- Search: Search button
- Save Log: Save Log button

At the bottom of the log table, it shows 'Total 2000 Items' and navigation links: [First Page](#), [Prev Page](#), [1/20](#), [Next Page](#), [Last Page](#).

## 6. Configuration screen

- 6.1 The configuration screen allows remote access to the recorder or camera menu for remote configuration. Most features are available for remote adjustment
- 6.2 The Local configuration option is where you set all the storage paths for downloading video and images. You can also change the stream from Main to Sub-stream and image size.

