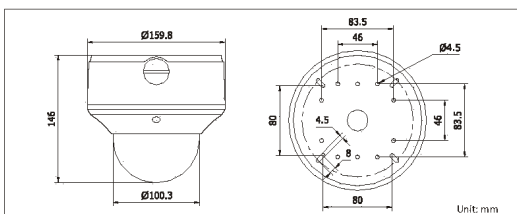




Key Features

- 1/2.5" progressive scan CMOS image sensor
- 5 Megapixel resolution (2560 x 1920)
- IR option (10 to 20m)
- 6 simultaneous users
- H.264/MPEG4/MJPEG streaming
- Full HD 1080P Real time video
- Day/night auto switch
- IP66 rating
- PoE
- Vandal proof
- Compatible with Videoswitch Net Recorders
- Compatible with Vi-Viewer1000 & Vi-Viewer4000

Dimensions



Order Codes

- Vi-C5116** **5MP Outdoor Dome Camera**
Vi-C5116-IR **5MP Outdoor Dome Camera with IR**

Specification

Camera

Image sensor	1/2.5" progressive scan CMOS
Minimum Illumination	0.6 lux@F1.2, AGC on, 1 lux@F1.6, AGC on, 0 lux with IR
Shutter	1/25s to 1/100,000s
Lens	3.5 ~ 9 mm @F1.6 Angle of view: 92° ~ 36°
Lens mount	Ø14
Auto iris	DC drive
Angle Adjustment	Pan: 0° ~ 355°, tilt: 0° ~ 80°, rotation: 0° ~ 355°
Recommended orientation	Horizontal or vertical
Day & Night	Vi-C5116: Electronic Vi-C5116-IR: IR cut filter with auto switch

Compression

Video compression	H.264 / MPEG4 / MJPEG
Bit rate	32 Kbps ~ 16 Mbps
Dual stream	Yes (different video compression)
Simultaneous users	6

Image

Max image resolution	2560 × 1920
Frame rate	6.25 fps (2560 × 1920) 12.5 fps (2048 × 1536) 25 fps (1920 × 1080) 25 fps (1600 × 1200) 25 fps (1280 × 720)
Image settings	Saturation, brightness, contrast adjustable through client software or web browser

Network

Network storage	NAS
Alarm trigger	Motion detection, network disconnect, IP address conflict, storage exception
Protocols	TCP/IP, HTTP, DHCP, DNS, DDNS, RTP/RTSP, PPPoE, SMTP, NTP (SNMP, HTTPS, SIP, FTP, SRTP, 802.1x, IPv6 optional)
Security	Password protection, watermark
Compatibility	Videoswitch, ONVIF, PSIA, CGI

Interface

Communications interface	1 RJ45 10M / 100M ethernet port
Video output	1 Vp-p composite PAL output (75 Ω / RCA)
Local storage	Built-in Micro SD/SDHC slot, up to 32 GB
Reset button	Yes

Physical & Environmental

Operating temperature	-25°C ~ 60°C
Humidity	95% or less (non-condensing)
Power supply	24 VAC ± 10%, PoE (802.3af)
Power consumption	9W max (12W with IR option)
Impact protection	IEC60068-275Eh, 50J; EN50102, up to IK10
Ingress protection	IP66
Dimensions	Ø159.8mm x 146mm
Weight	2.1kg